

INSTALLATION INSTRUCTIONS

F-670

SPECIFICATIONS

Meter Body: Borosilicate Glass

Shield: Polycarbonate

Floats: #316 SS (optional teflon, Hastelloy C-276)

Adapters: PVC (optional CPVC, PVDF)

O-Rings: Viton

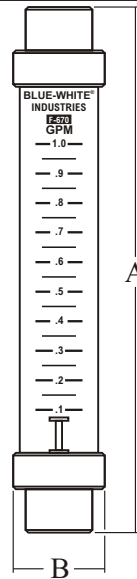
Union Nuts: PVC

Float Stops: 316 SS (optional Hastelloy C-276)

Scale: Permanent Silkscreen

Max. Pressure: 150 PSI (See Temperature vs. Pressure chart)

Max. Temperature: 200°F (See Temperature vs. Pressure chart)



F-670 Series
English System

Letter	Dimension
A	10"
B	1-3/4"

F-670 Series
Metric System

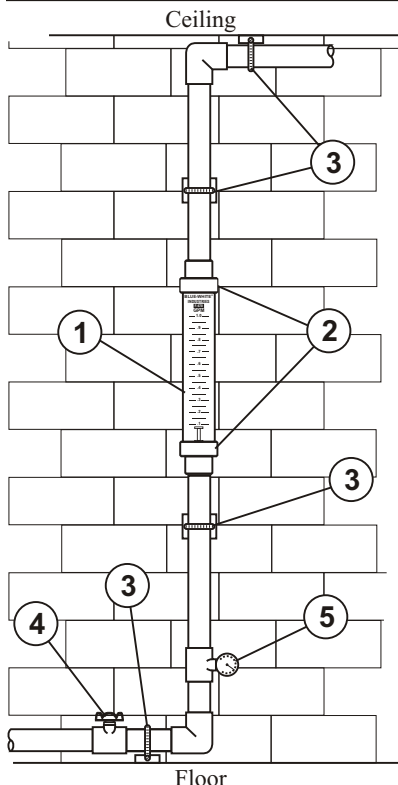
Letter	Dimension
A	254mm
B	44.5mm

Your Blue-White® F-670 Series In-Line Flowmeter

Your Blue-White® flowmeter was designed to be easy to install.

Please read the Instruction Guideline on the next page before installing your flowmeter.

This flowmeter is an instrument, and special care should be taken when installing.



Installation Guideline

Caution: Follow These Tips to avoid Failure

Danger: Wear eye protection when installing or removing flowmeter.

1. Flowmeter must be installed in an exact vertical plane to ensure accuracy.

Use Teflon® tape (or similar) for the flowmeters threaded adapters.

2. Hand tighten union nuts. *No wrenches.*
3. Wall, floor and ceiling mounts are to be carefully aligned and sturdy. Wall, floor and ceiling supports are recommended as needed.

Never allow the flowmeter to support the weight of related piping or tubing.

4. **Valves** - Avoid a system that will impose a sudden burst of flow to the meter. Such a burst will cause the float to impact the float stop with destructive force. Magnet, solenoid, or other quick opening valves cannot be used unless meter is protected against sudden bursts of flow.
5. Maximum working pressure *not to exceed* recommended psi at fluid temperature (see graph on next page).

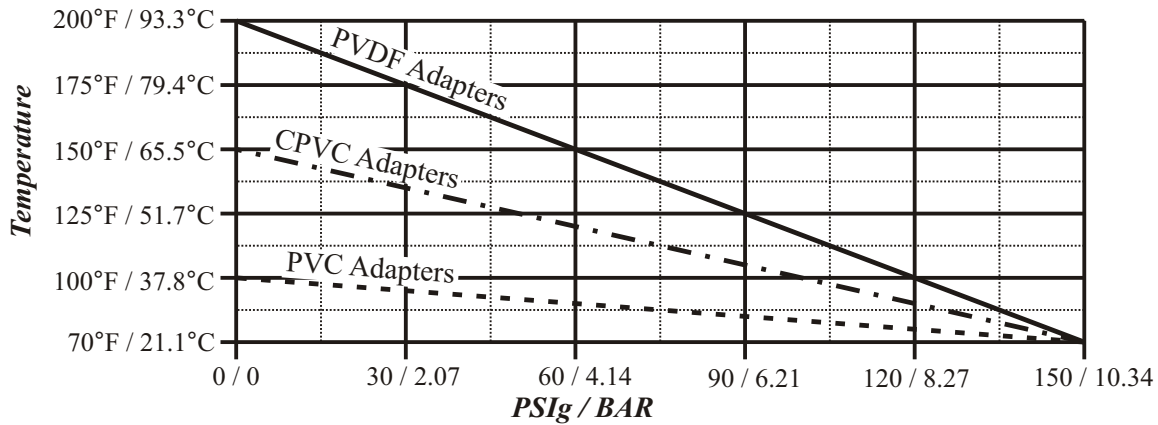
Cleaning - The flowmeter body and all other parts can be cleaned by washing in a mild soap and water solution. A soft bristle bottle brush will simplify cleaning inside the meter body. Note the floats up position for re-assembly.

Blue-White®
Industries, Ltd.

PT SARANA PRIMA ENGUNA
Jl. Gunung Sahari Raya 84 C, Jakarta - 10610, www.spe.co.id

80000-353 REV. 2/2004

Temperature vs. Pressure

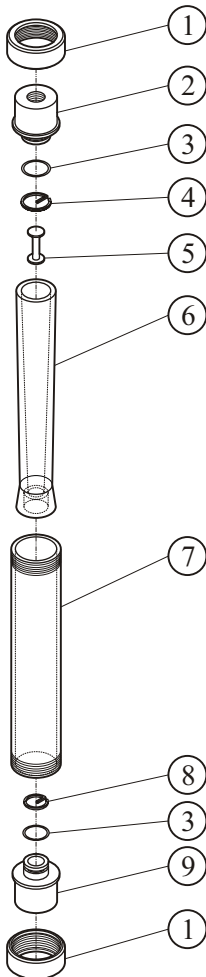


Pressure and temperature limits are inversely proportional. At the maximum suggested pressure the temperature must not exceed 70°F / 21.1°C; at the maximum suggested temperature the pressure must not exceed zero psi. We cannot guarantee our flowmeters will not be damaged either at or below the suggested limits because many factors influence meter integrity; stress resulting from meter misalignment, damage due to excessive vibration and/or deterioration caused by contact with certain chemicals. These situations and others tend to reduce the strength of the materials from which the meters are manufactured.

Flowmeters are tested and calibrated for water or air only.

Although meters may be suitable for other chemicals, Blue-White cannot guarantee their suitability.

Exploded View



REPLACEMENT PARTS LIST

ITEM	DESCRIPTION-MAT'L	F-67375	F-67376	F-67500
1	Union nut-PVC	76001-112	76001-112	76001-112
2	Outlet adapter, 3/8 FPT, PVC	76001-113	76001-113	76001-113
2	Outlet adapter, 3/8 FPT, CPVC	76001-115	76001-115	76001-115
2	Outlet adapter, 3/8 FPT, PVDF	76001-117	76001-117	76001-117
2	Outlet adapter, 1/2 FPT, PVC	76001-136	76001-136	76001-136
2	Outlet adapter, 1/2 FPT, CPVC	76001-138	76001-138	76001-138
2	Outlet adapter, 1/2 FPT, PVDF	76001-140	76001-140	76001-140
2	Outlet adapter, 3/4 MPT, PVC	76001-142	76001-142	76001-142
2	Outlet adapter, 3/4 MPT, CPVC	76001-144	76001-144	76001-144
2	Outlet adapter, 3/4 MPT, PVDF	76001-146	76001-146	76001-146
3	O-ring-viton	90003-045	90003-045	90003-045
4	Outlet float stop-SS	76001-119	76001-119	76001-119
4	Outlet float stop-Hast.	76001-134	76001-134	76001-134
5	Float-316SS	76001-122	76001-123	76001-126
5	Float-Teflon	76001-121	N/A	N/A
5	Float-Hastelloy C-276	N/A	76001-124	76001-125
6	Meter body-Glass	90018-024	90018-025	90018-026
7	Shield GPM-Polycarb	70003-178	70003-179	70003-180
7	Shield LPM-Polycarb	70003-181	70003-182	70003-183
8	Inlet float stop-SS	76001-120	76001-120	76001-120
8	Inlet float stop-Hast.	76001-135	76001-135	76001-135
9	Inlet adapter, 3/8 FPT, PVC	76001-114	76001-114	76001-114
9	Inlet adapter, 3/8 FPT, CPVC	76001-116	76001-116	76001-116
9	Inlet adapter, 3/8 FPT, PVDF	76001-118	76001-118	76001-118
9	Inlet adapter, 1/2 FPT, PVC	76001-137	76001-137	76001-137
9	Inlet adapter, 1/2 FPT, CPVC	76001-139	76001-139	76001-139
9	Inlet adapter, 1/2 FPT, PVDF	76001-141	76001-141	76001-141
9	Inlet adapter, 3/4 MPT, PVC	76001-143	76001-143	76001-143
9	Inlet adapter, 3/4 MPT, CPVC	76001-145	76001-145	76001-145
9	Inlet adapter, 3/4 MPT, PVDF	76001-147	76001-147	76001-147